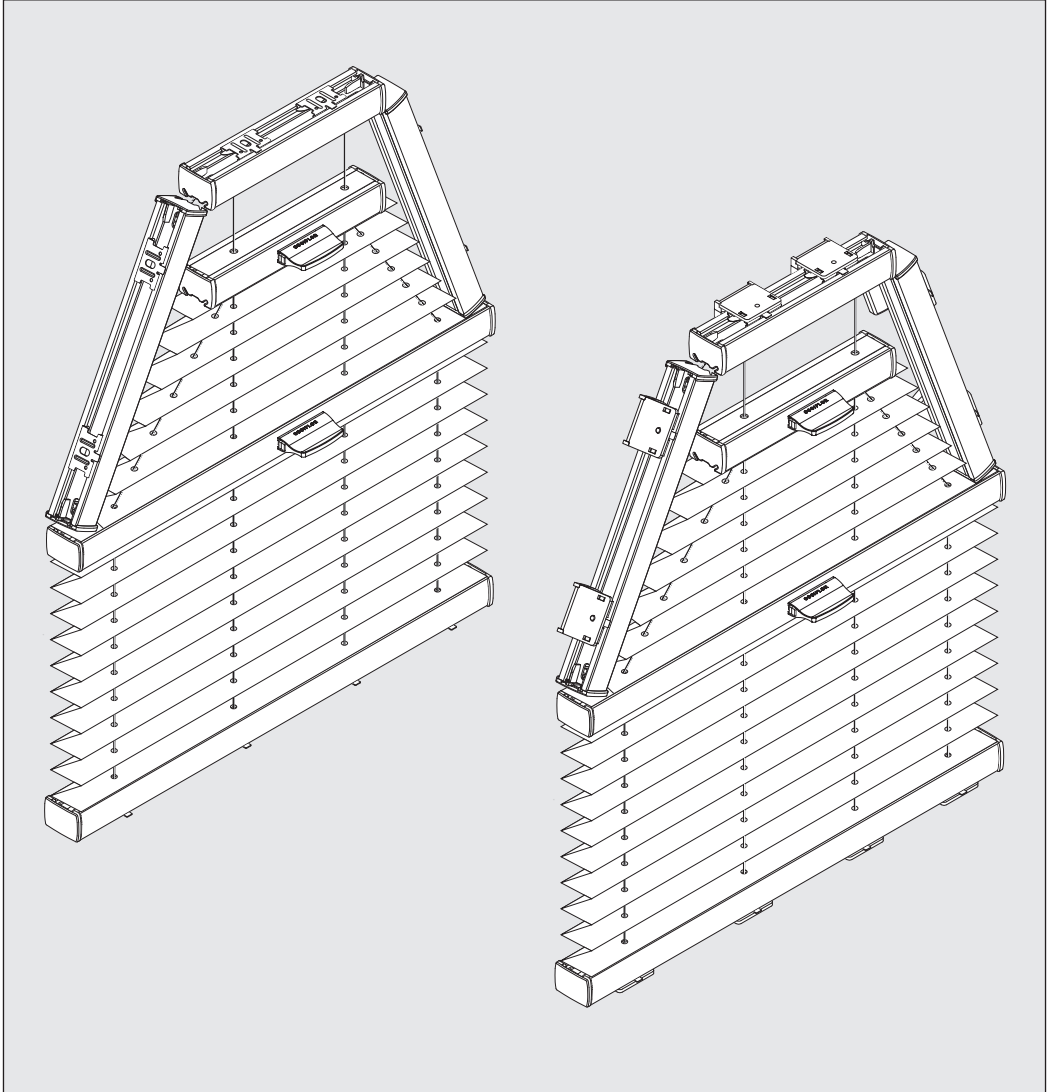
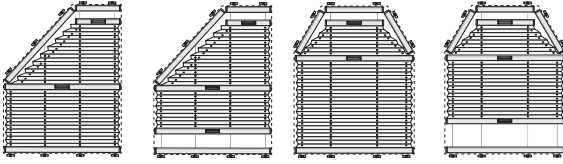
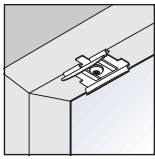
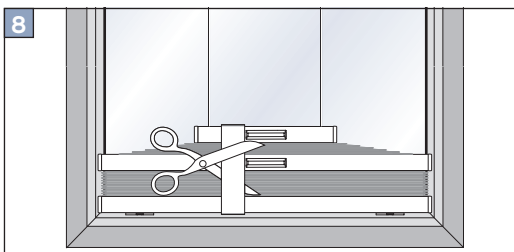
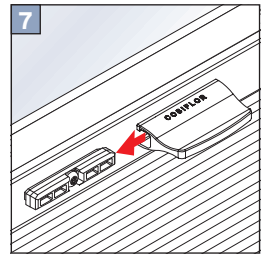
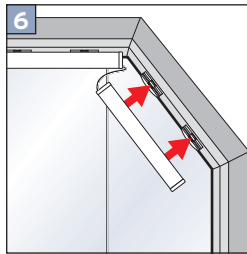
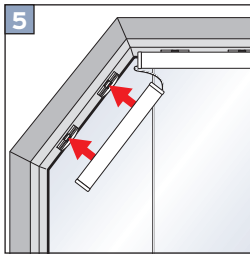
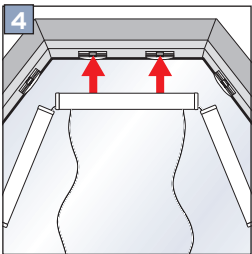
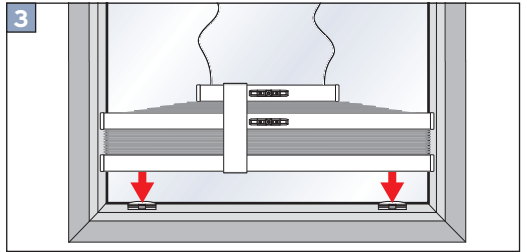
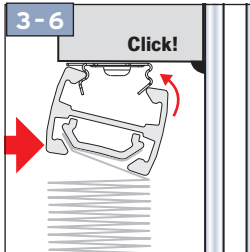
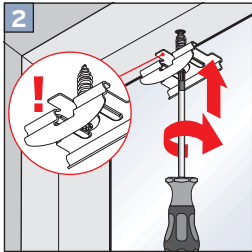
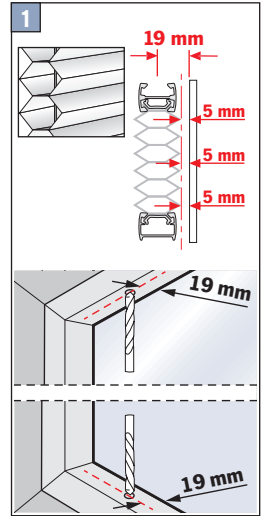
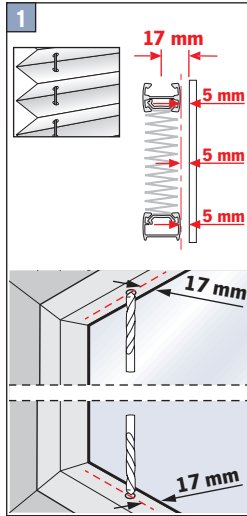
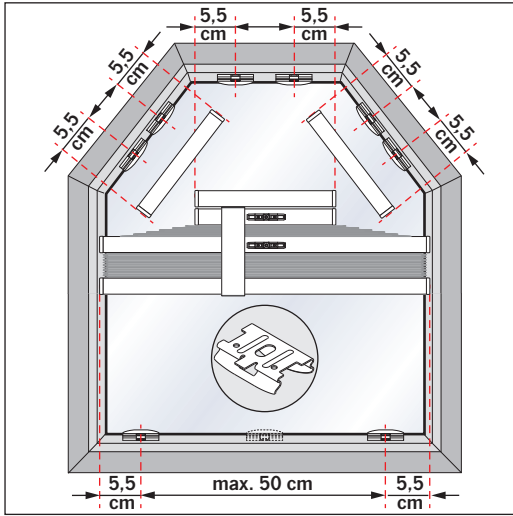
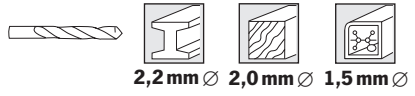


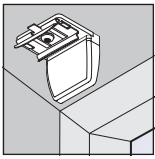
## Montageanleitung für Cosiflor VS 5, VS 5 SD, VS 6, VS 6 SD



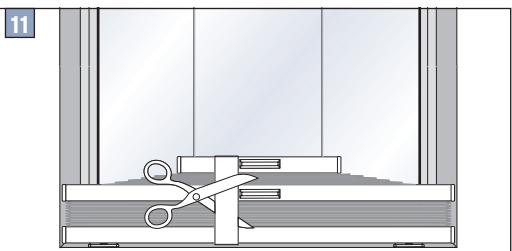
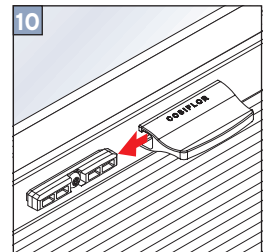
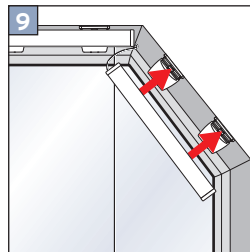
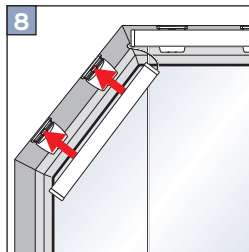
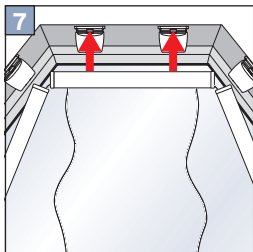
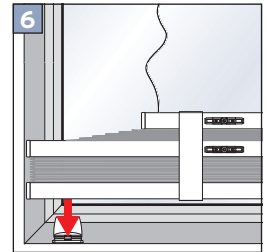
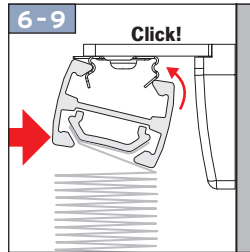
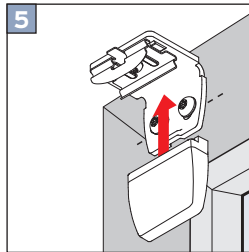
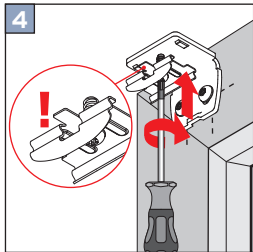
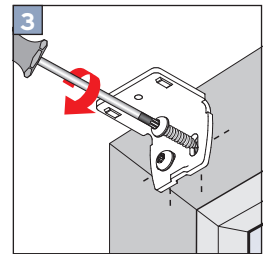
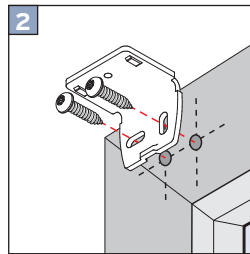
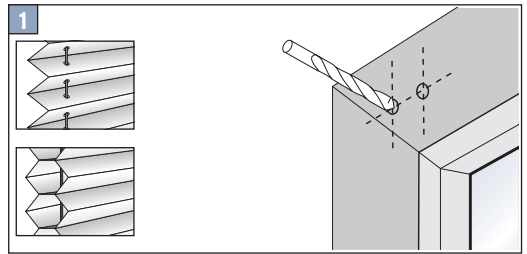
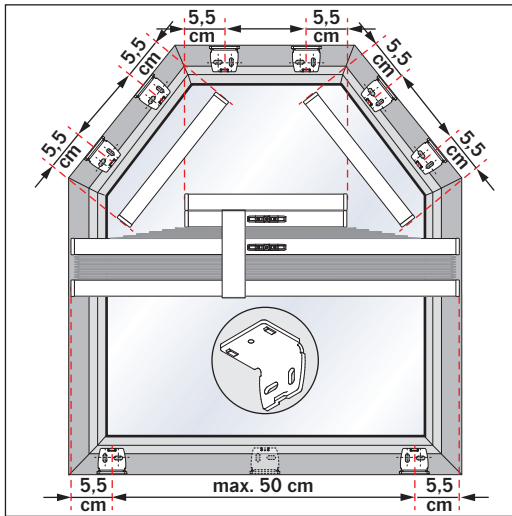


# Falzmontage

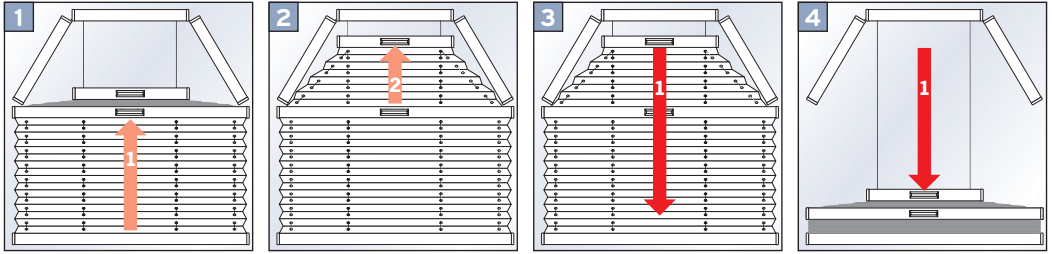




## Winkelmontage

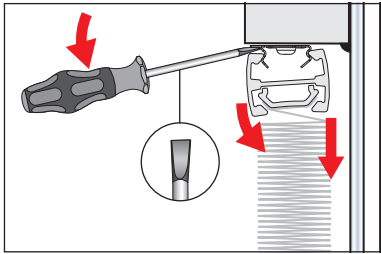


## Bedienung

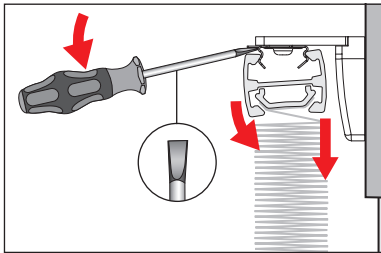


## DEMONTAGE

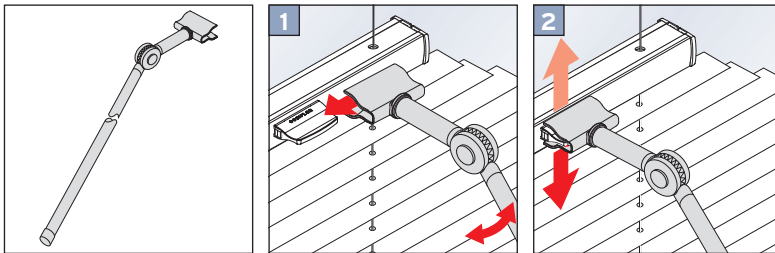
### Falzmontage



### Winkelmontage



### Optional: Bedienstab



An Giebelfenstern sind häufig fünfeckige und sechseckige Senkrechtfenster zu finden. Für solche Fenster sind die Plisseetypen VS5 und VS6 geeignet. Ein solches Plissee lässt sich von oben nach unten öffnen. Bei den SD Modellen kann das Plissee auch von unten nach oben geöffnet werden. Für die Montage in einem schrägen Falz, bestellen Sie bestenfalls zusätzlich [Ausgleichskeile](#) mit, um die abgeschrägten Montageflächen auszugleichen.

[Montageanleitungen im Überblick](#)